

bloc·smith
k i t c h e n

“ BLOC SMITH WAS DESIGNED BASED UPON THE IDEA OF KITCHEN SIMPLICITY. A KITCHEN THAT BRINGS FRIENDS, FAMILY AND LOVED ONES TOGETHER IN PURSUIT OF JOY, LAUGHTER, AND MEMORIES - SERVING AS A MULTIFUNCTIONAL SPACE WHERE EVERYONE CAN SPEND TIME AND SHARE ACTIVITIES TOGETHER. BLOC SMITH IS THE PERFECT COMBINATION OF FUNCTIONALITY AND TIMELESS DESIGN THAT SEAMLESSLY BLENDS IN WITH ANY SURROUNDING ATMOSPHERE. “

K I T C H E N
S E R I E S

L O G

FINE LINEAR WOOD GRAIN EXPRESSES ITSELF AS A NATURE SENSE.

2 0 2 0

- 1 -

B L A C K F O R E S T

SIMPLE ELEMENTS ENRICHED BY THE BEAUTY OF IMPERFECTION.

2 0 1 8

- 1 0 -

A U T U M N B L O C

WHEN WOOD AND QUARTZ MEET EACH OTHER AT THE HEART OF THE HOUSE.

2 0 1 7

- 1 6 -

W O O D

- 2 8 -



LOG

FINE LINEAR WOOD GRAIN CONVEYS A SENSE OF NATURE.



“ THE WARM AND EYE-PLEASING KITCHEN
FEATURES A LONG LINEAR OAK WOOD IN MILK-
WHITE HUE - WRAPPED IN AN INNOVATIVE, LOW
REFLECTIVE ACRYLIC RESIN IN BEIGE; HELPING
TO ELEVATE THE MOOD IN YOUR HOUSE. “





The beauty of adopting entirely plain acrylic resin on vertical cabinet doors lies in its emblem of a canvas for the horizontal linear wood grain island drawer - to be laid on without being disturbed by the surrounding. The precise alignment combined with a thoughtful arrangement infuses the space with balance and harmony.



Above: A close-up of the seamless island corner of the worktop frame and side panel. Right page: A close-up of the 45mm solid oak wood work table residing on the acrylic resin island top.





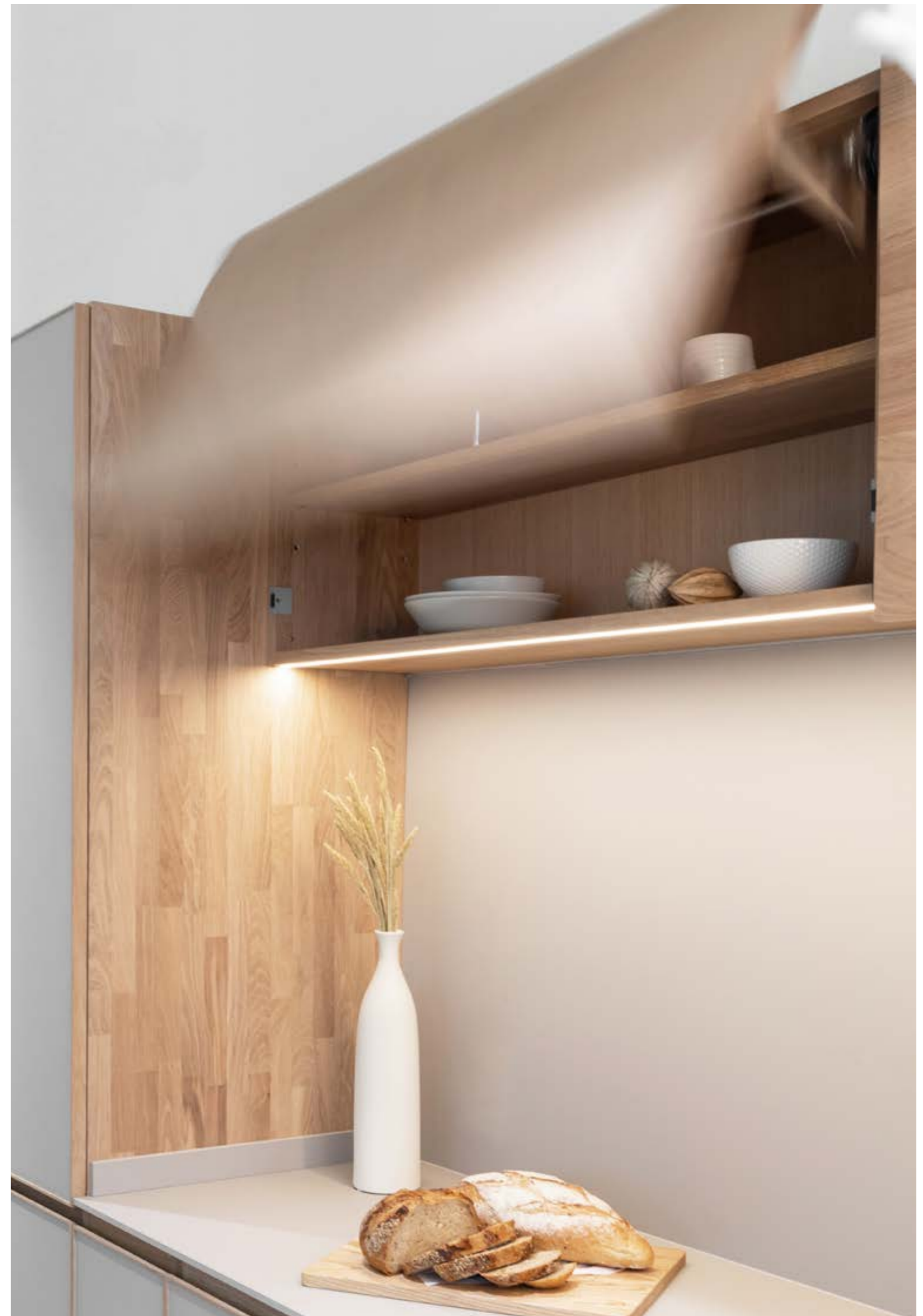
Podium personalized handleless drawers and inner equipment in milkwhite color on oak wood, bespoke to your preference regarding the kitchen size. Includes a utensil box, knife tray, spice tray, and pots and pans organizer.

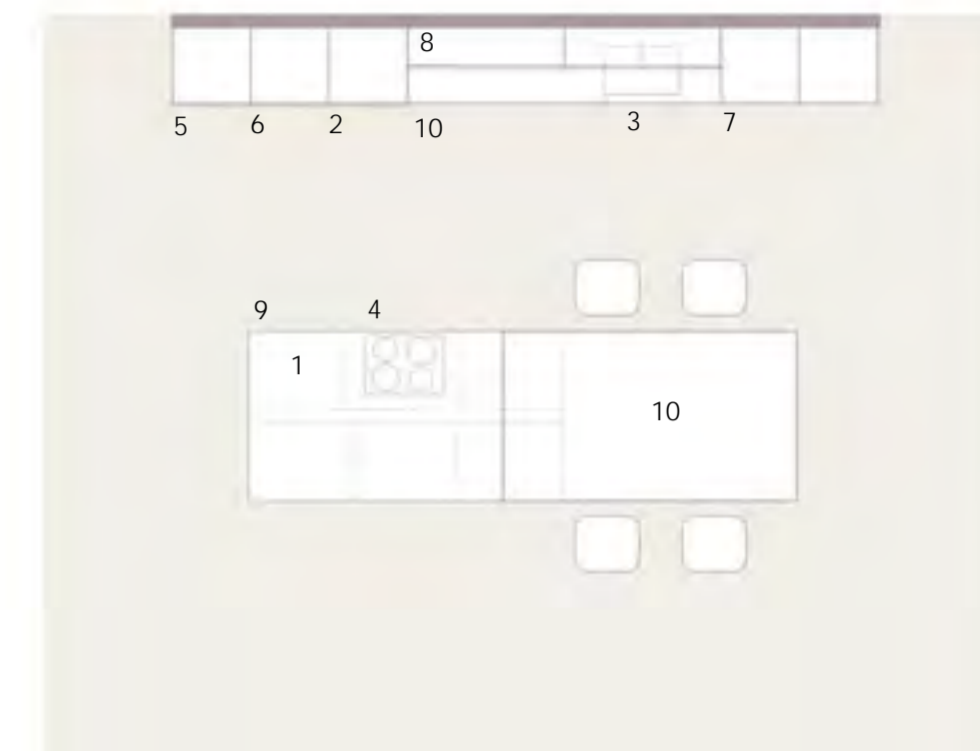
A close-up of oak wood interior drawers embraced by box joint details.



“ LOG ASPIRES TO COMPOSE A PLEASING,
MULTI-FUNCTIONAL KITCHEN WHICH COMPLEMENTS
CRAFTSMANSHIP WITH NATURE HARMONIOUSLY.
NOT ONLY CREATING A SATISFYINGLY SERENE AMBI-
ENCE WHILST ALSO BEING FUNCTIONAL TO USE. THE
SUBTLE DETAILS, DURABILITY, AND SAFETY ARE
EVIDENT IN EVERY UNIT. ”

Right page: Bringing the automatic lift-up system into linear hanging
unit doors allows access to the hanging unit to be effortless.





- | | | | |
|---|--|----|---|
| 1 | Fenix Arizona Beige top preparation area | 6 | Glass Tall unit with 3000K LED strip lights and pull-out inner drawer |
| 2 | Tall unit with a built-in fridge and freezer | 7 | Tall unit with built-in oven and microwave |
| 3 | Fenix Arizona Beige sink | 8 | Hanging unit with automatic door lift up |
| 4 | Hob 4 burners | 9 | Base units with an accessories drawer |
| 5 | Tall unit with Vauth Sagel's equipment storage | 10 | Milk White 45mm. oak wood top overlaps on the island area. |

B L A C K F O R E S T

SIMPLE ELEMENTS ENRICHED
BY THE BEAUTY OF IMPERFECTION.

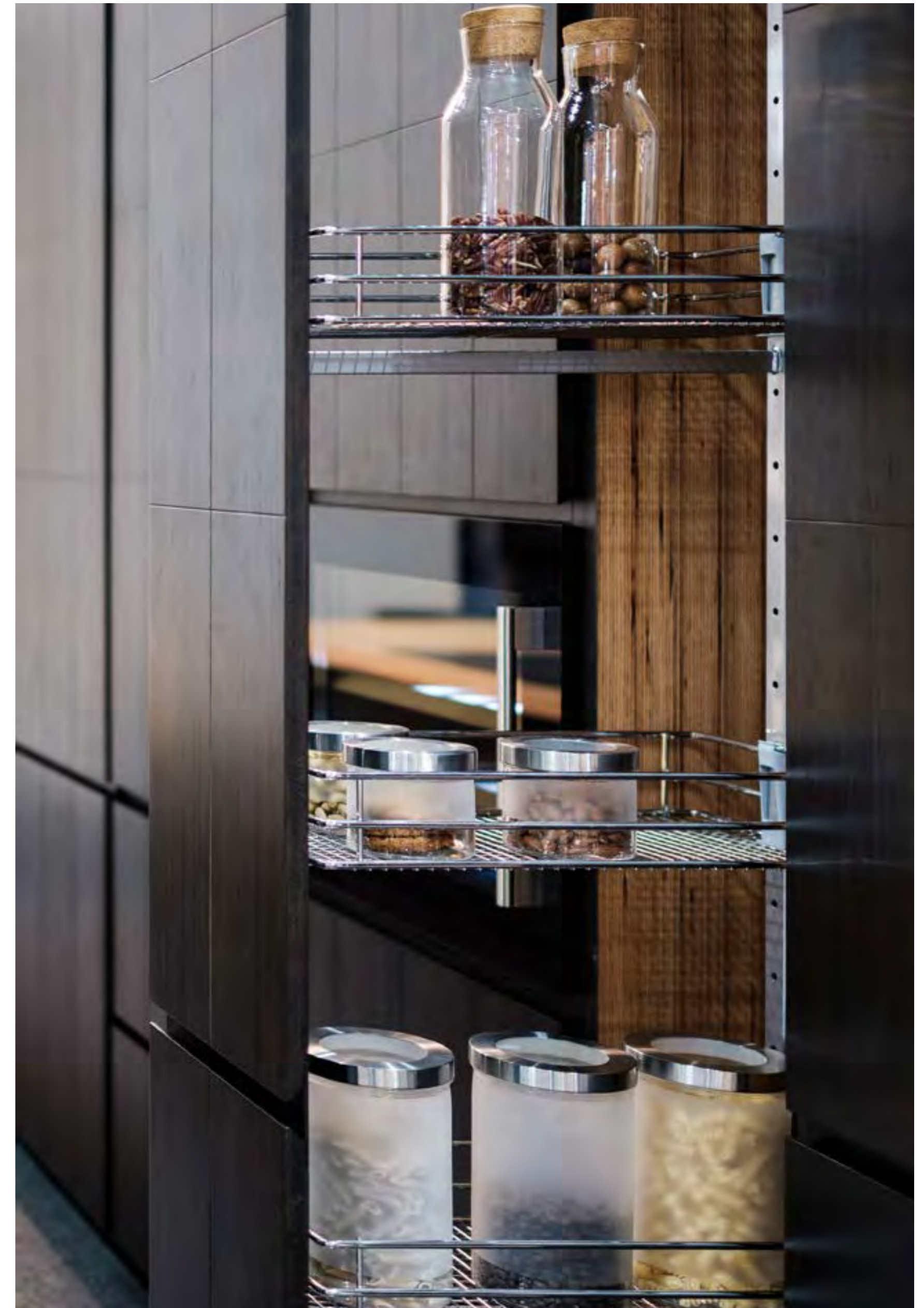




“ THE SECTION OF LAMINATED VENEER
LUMBER BEACH WOOD CREATES A STRAIGHT-LINE
EXHIB - ITS CALMNESS WITH THE BLACK ROUGH
BANDSAWN OAK WOOD DOOR BLENDS TWO SOULS
INTO AN ELEGANT FORM. “

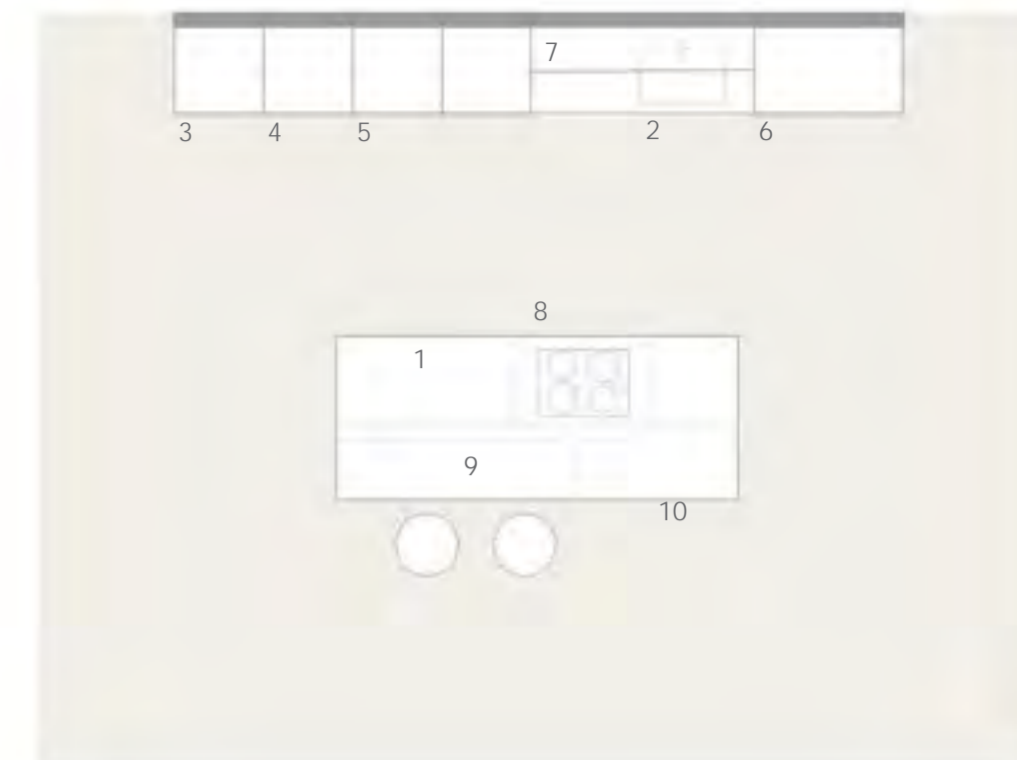


Above: A close-up of the island unit's front in Baubuche beech wood worktop intersects with the black rough bandsawn oak wood side panel. Right page: A close-up of the tall unit features a pull-out storage system with Vauth Sagel's storage baskets.





Above: Tall unit system with storage basket by Vauth Sagel Inside. To the left page: Glass Tall unit with 3000K LED strip lights with bottles inner drawer beech wood.



- | | | | |
|---|---|----|--|
| 1 | The Natural beechwood Baubuche worktop preparation area | 5 | Storage space and shelves Tall units with door |
| 2 | Sink under-top-mounted | 6 | Display unit with glass hanger, shelves, and bottles inner drawer. |
| 3 | Pull-Out system Tall unit with Vauth Sagel's storage basket | 7 | Wall shelves with 3000K LED strip lights |
| 4 | Tall unit with built-in wine cooler. | 8 | Hob 4 burners |
| 5 | Tall unit opening system in black oak wood with VauthSagel equipment for your maximum storage space | 9 | Base unit Display shelves |
| | | 10 | Base unit disassemble storage |



A U T U M N B L O C

when wood and quartz meet each other
at the heart of the house.





“ AUTUMN BLOC REPRESENTS THE CONFIGURATION
CLARITY OF SOLID AND VOID. THE COMBINATION OF WOOD
AND QUARTZ IS PERSONALIZED TO YOUR HOME AESTHETIC.
THE COEXISTING ISLAND AND TABLE BECOME THE HEART
OF COMMUNICATION TO BALANCE THE RELATIONSHIP WITH
BOTH FRIENDS AND FAMILY, EQUIPPED WITH THE MOBILITY
TO MOVE AROUND WITHIN THE ROOM. ”

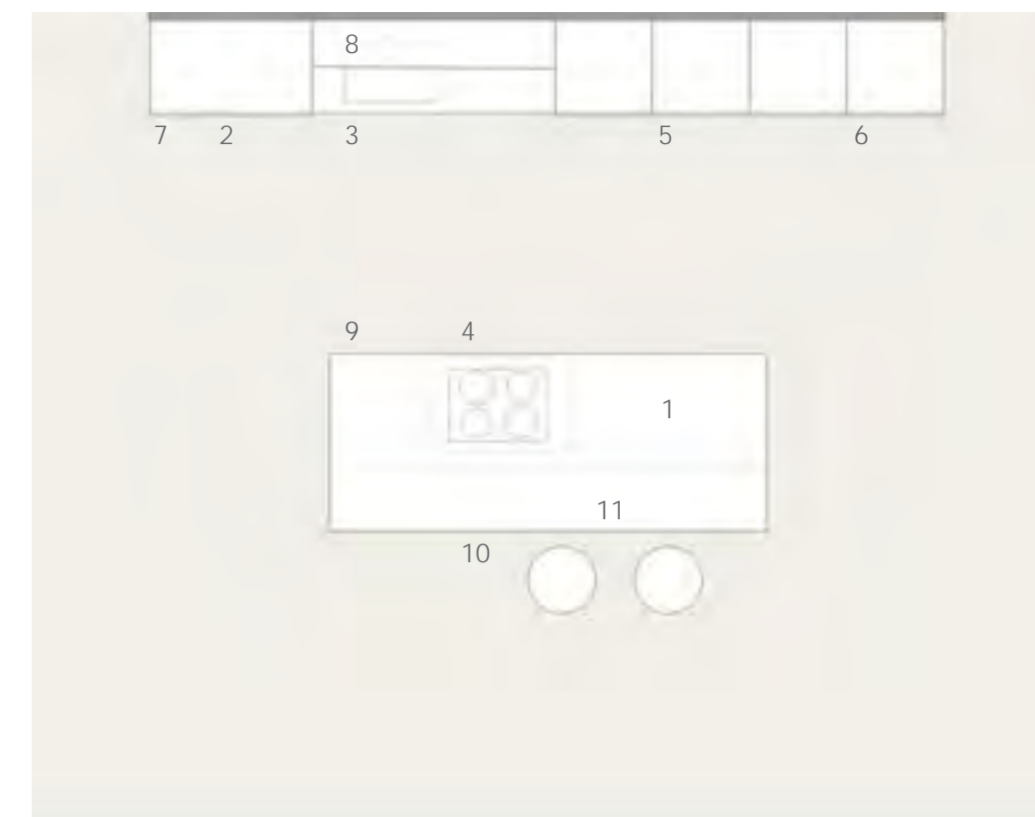


Above: Close-up of flamed quartz top with oak wood base island units in desert grey with grooved lines detail on the side panel. Left page: Inner drawer in natural oak wood finish with adjustable cutlery trays.



Above: Handleless oak wood door in a natural finish, internal drawers hiding inside oak wood shelves and tall units in a desert grey finish. Right page: A close-up of taper handleless oak wood door in a natural finish with grooved lines detail.



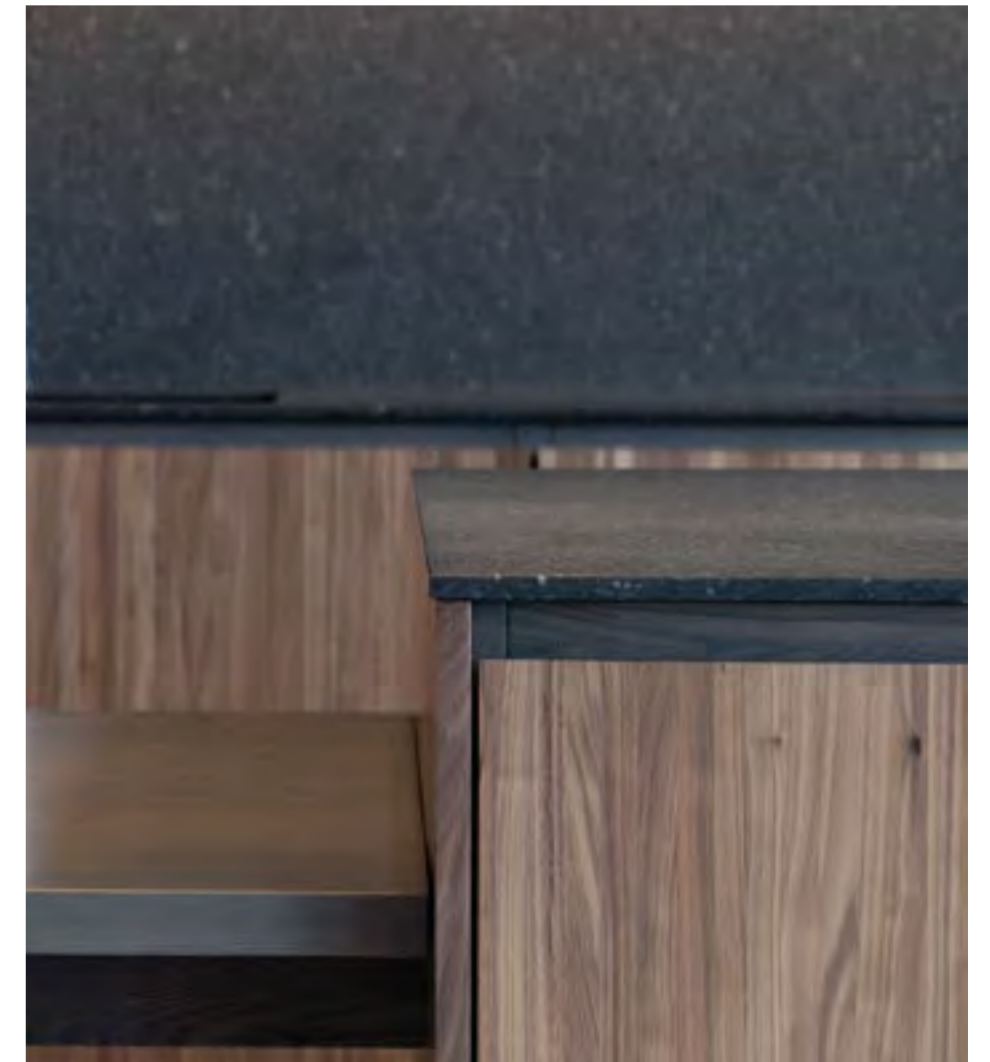


- | | | | |
|---|---|----|--|
| 1 | Arden blue volcano island top | 7 | Tall unit with five internal drawers |
| 2 | Tall unit with a built-in fridge and freezer | 8 | Hanging units with storage |
| 3 | Sink under-top-mounted | 9 | Island drawers base units |
| 4 | Hob 4 burners | 10 | Island open shelves natural finished oak wood base unit |
| 5 | Tall units with a built-in oven and microwave | 11 | 45 mm. overlapping natural finished solid oak wood worktop |
| 6 | Tall unit dark gray ash wood open shelves | | |





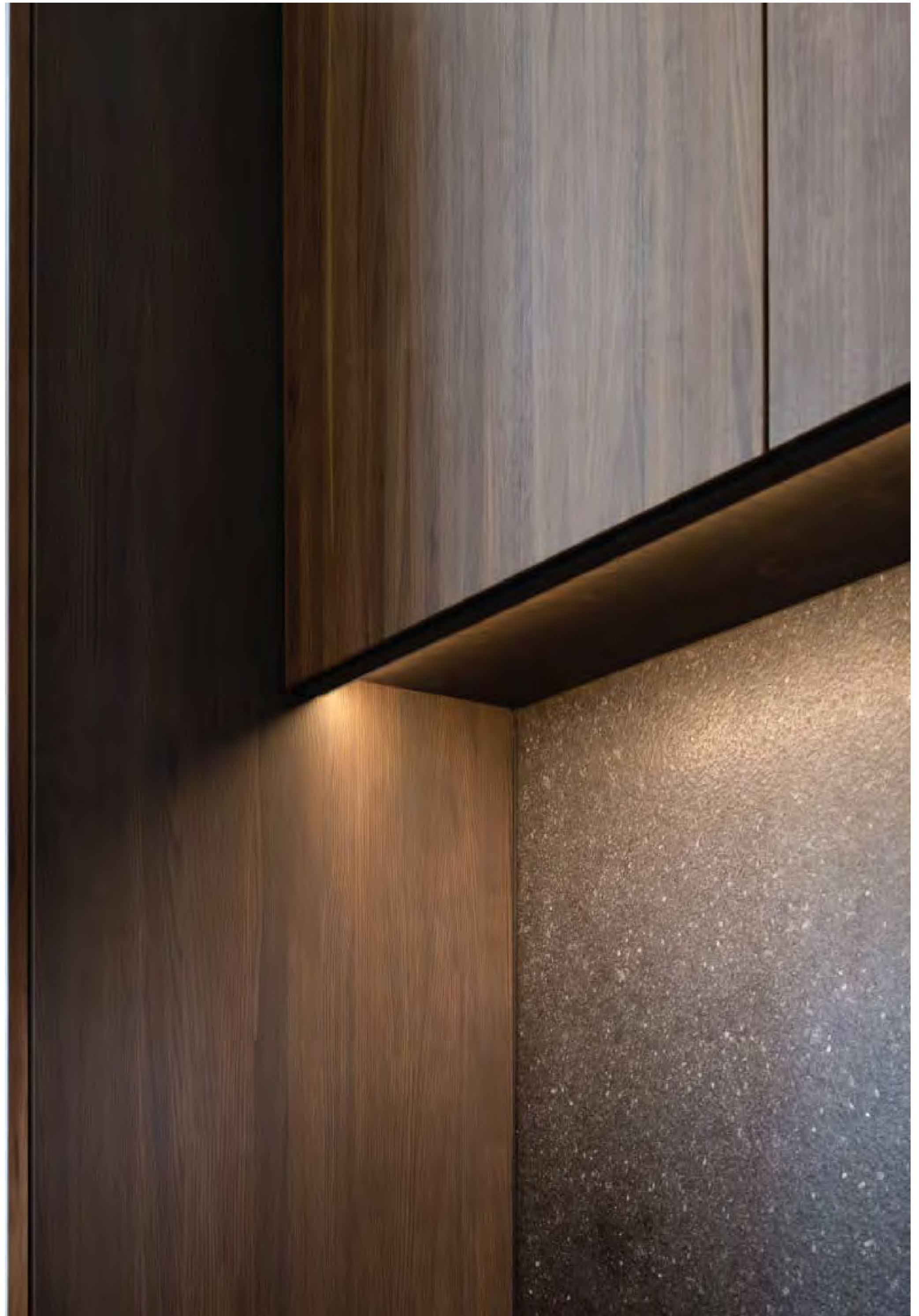
Walnut wood door in a soft natural finish with a quartz backsplash. Tall unit with built-in oven and base units with under-top-mounted sink.



Above: A close-up of solid dark gray table and walnut wood island unit in a soft natural finish.

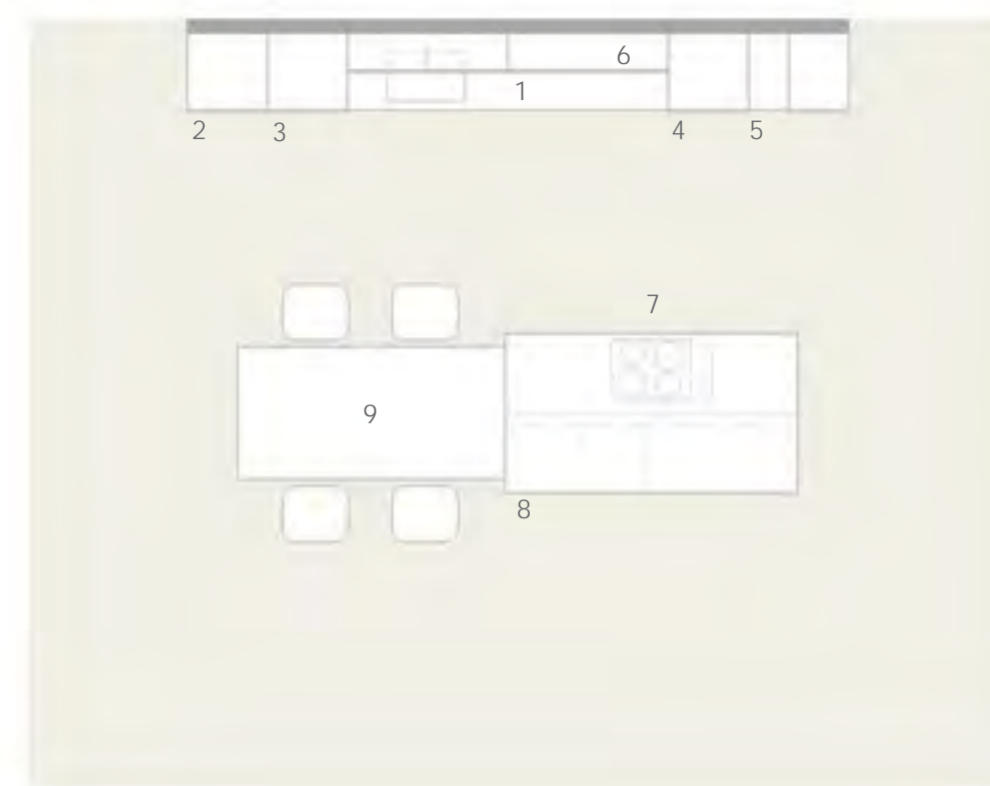


Above: A close-up of hidden 3000K LED strip lights under the hanging unit with walnut wood doors in soft natural walnut wood finish.





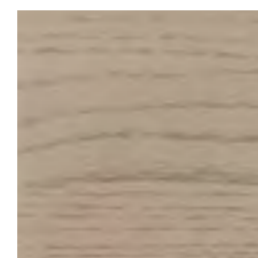
A close-up of flamed quartz worktop with walnut wood drawers in soft natural finishes with vertical grooved lines on the side panel.



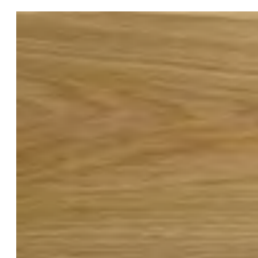
- | | | | |
|---|--|---|--|
| 1 | Arden blue volcano top preparation area and under-top-mounted sink | 6 | Hanging units with hidden 3000K LED strip lights |
| 2 | Tall unit with open door system storage basket by Vauth Sagel | 7 | Hob 4 burners |
| 3 | Tall unit with built-in oven | 8 | Island base units with soft natural walnut wood finished doors and dark grey ash wood open shelves |
| 4 | Tall unit with a built-in fridge and freezer | 9 | 1000 x 2000 mm Solid dark gray ash wood table |
| 5 | Tall unit with open shelves in dark grey ash wood | | |

W O O D

O A K



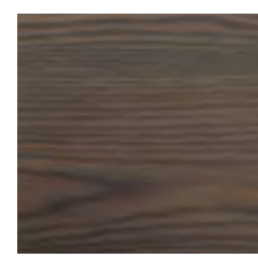
BS. Milk White



BS. Natural



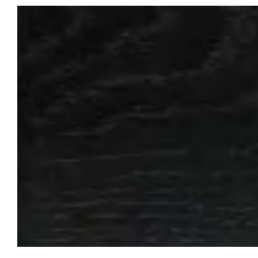
BS. Home grand view



BS. Desert Grey

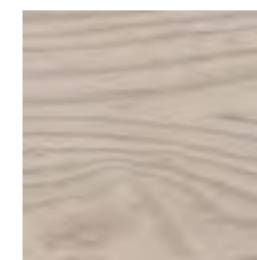


BS. Walnut Brown

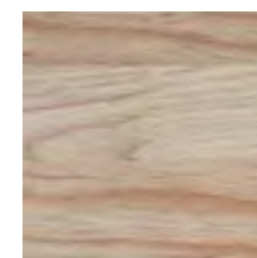


BS. Black

A S H



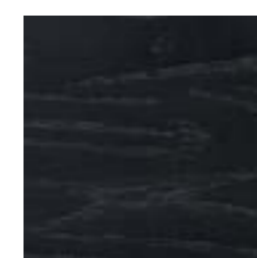
BS. Natural White



BS. Natural

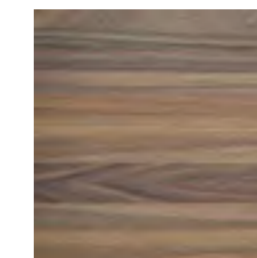


BS. Dark Grey

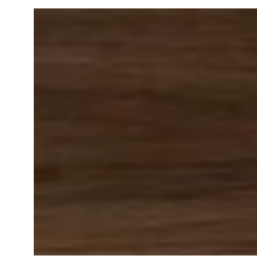


BS. Black

W A L N U T



BS. Soft Natural



BS. Natural

bloc·smith

FLAGSHIP STORE - SATHORN

60/3 Soi Si Bumphen,
Thung Maha Mek, Sathorn,
Bangkok, 10120 Thailand

tel: +66 (0)2 1206 458
email: sale_sathorn@podium.co.th
Line ID: @podiumth

FACTORY (FOR INTERNATIONAL CUSTOMERS)

16 moo 11 Sataheep-Kabinburi RD.
Panusnikom, Chonburi 20140

tel: +66 3820 800-6